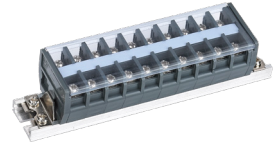


Product overview

Product characteristics

- The insulation material is made of polymer polycarbonate material, which has flame retardant, high temperature resistance, no water absorption, moisture resistance, good insulation performance, impact resistance, not easy to crack, anti-aging and other high-quality characteristics.
- Rated insulation voltage 660V, rated current 15~100A, rated conductor sectional area 1.5~25mm²
- Conductive parts are nickel-plated brass for superior conductivity.
- The wiring screw adopts the composite groove combination process, and the two kinds of straight and cross screwdrivers are universal.
- Metal structural parts adopt combined screw crimping technology, which can be used with OT and UT end socket and installed with G-type guide rail.
- The cover plate is made of a transparent material, so that it is convenient to disassemble and assemble and it is intuitive, safe and reliable. Also it can see through all conductive parts in the terminal, thereby achieving the purposes of convenient maintenance and safe use of electricity.



Product selection

Product name	Current	Number of sections
TD	<input type="checkbox"/>	<input type="checkbox"/>
	15A 20A 30A 60A 100A	10 sections

Technical parameters

Model	Rated insulation voltage (V)	Rated current (A)	Outline and installation dimension (mm)				Terminal screw dxa
			A	B	H	L1	
TD-15A	660	15	2.4	31.5	24	8.1	3×8
TD-20A	660	20	4.0	39.5	33	11.8	4×8
TD-30A	660	30	4.3	44	38	14.2	5×10
TD-60A	660	60	7.0	53	46	18.3	5×10
TD-100A	660	100	6.6	60	42	20.8	6×12

National Standards GB/T 14048.7

Outline and installation dimension

